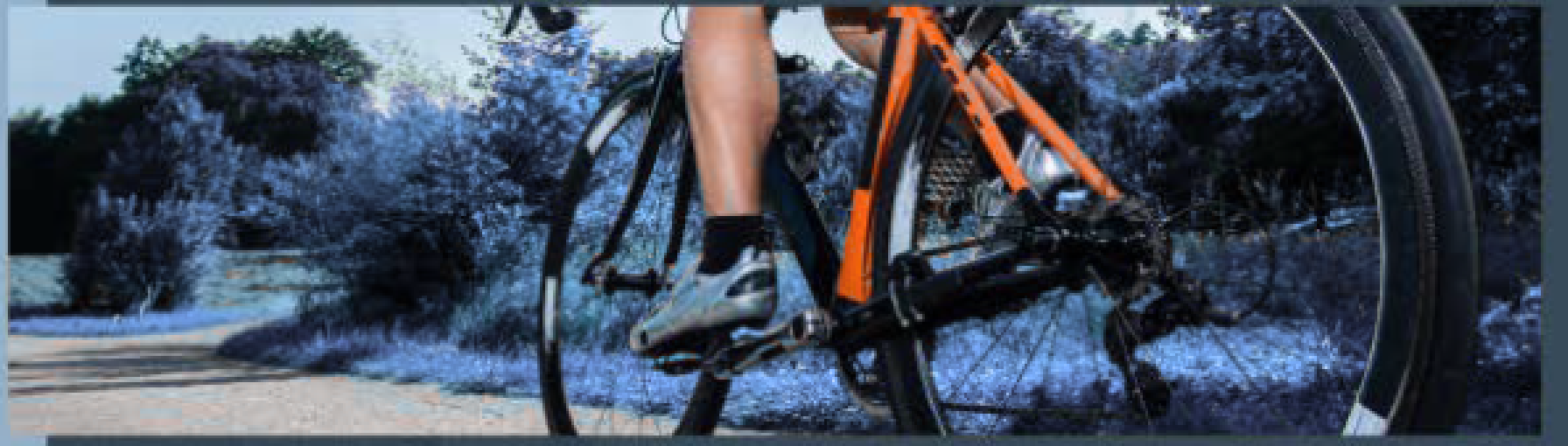


**Just roll up, lock it,  
and go**

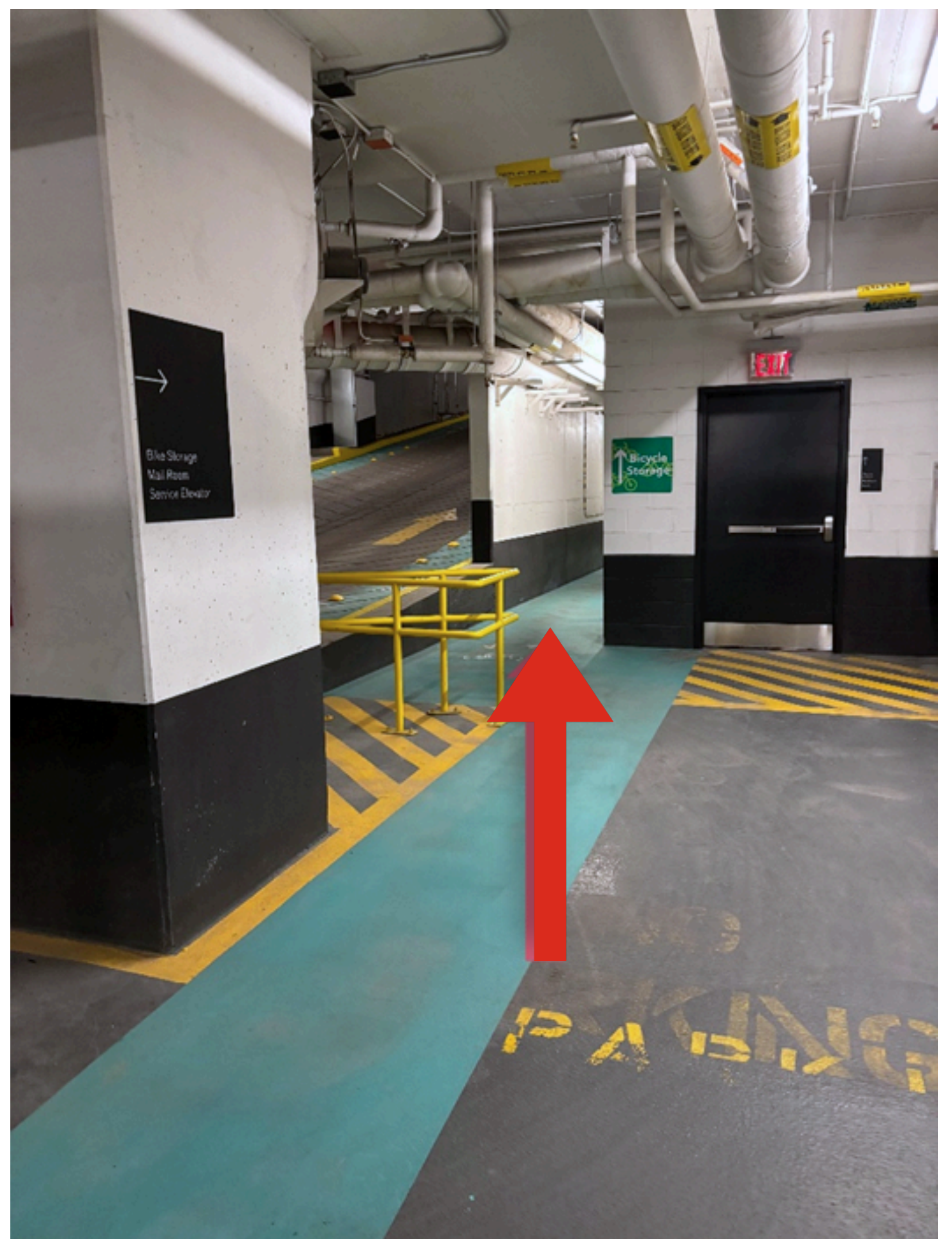
Commuting just got easier with  
secure bike storage on level P1

OXFORD



# Accessing Eau Claire Tower Bike Parking South Entrance (via 3<sup>rd</sup> Ave)

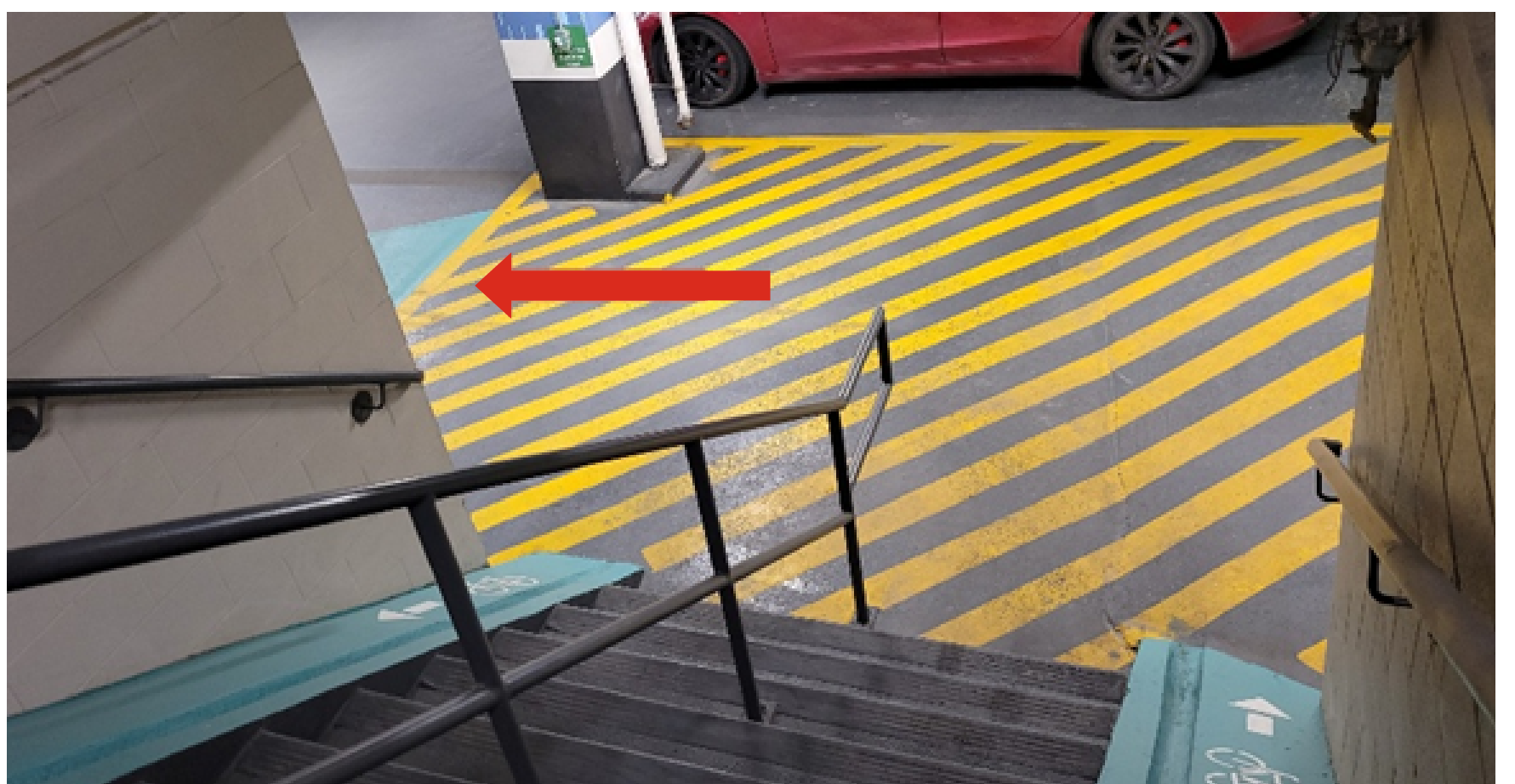
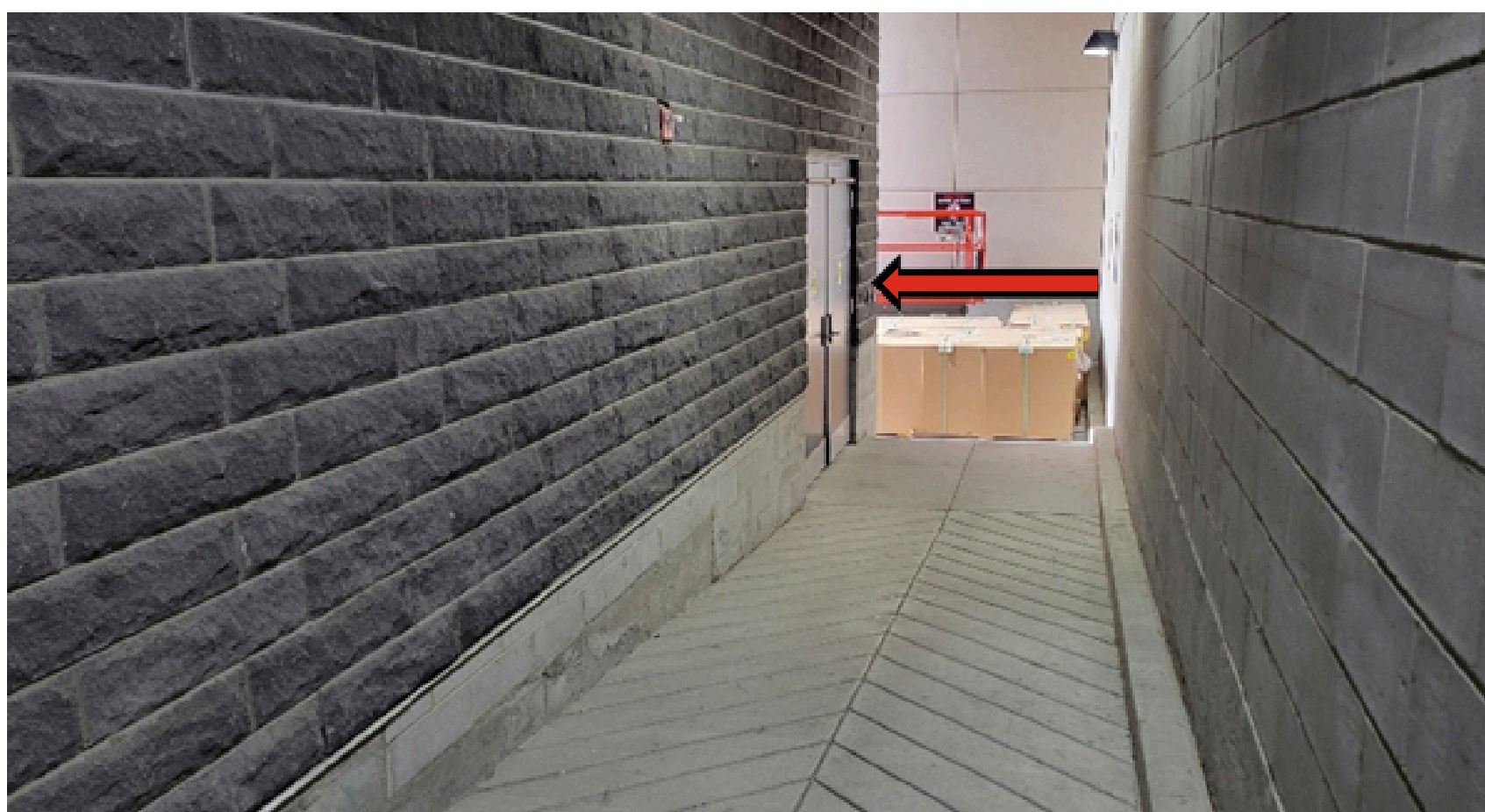
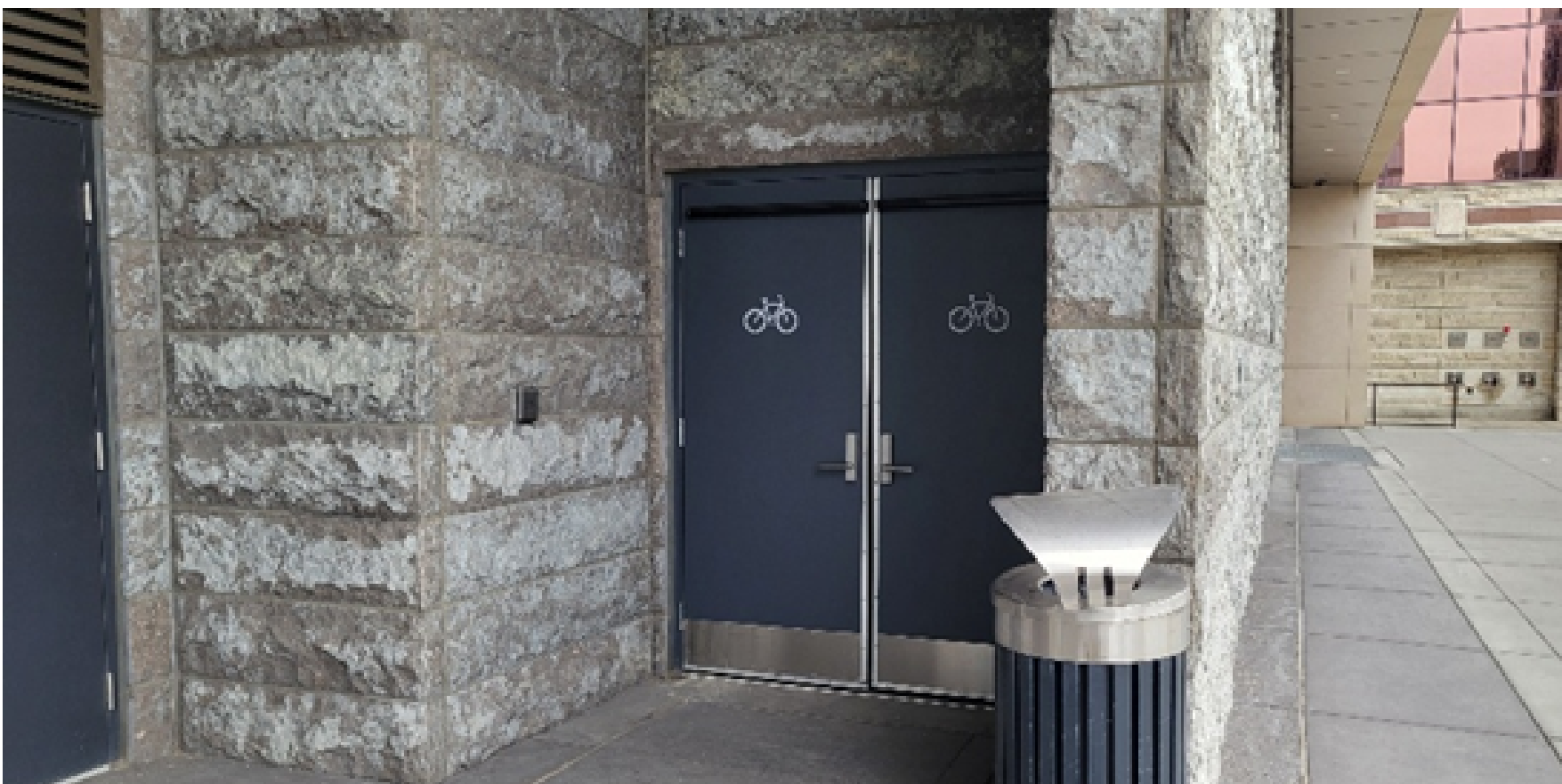
- To access the bike facility from 3rd Avenue, use the parkade ramp.  
The parkade doors will open when a bike or card is detected.
- Follow the teal-colored path to find the “Bike Storage” Room



# Accessing Eau Claire Tower Bike Parking

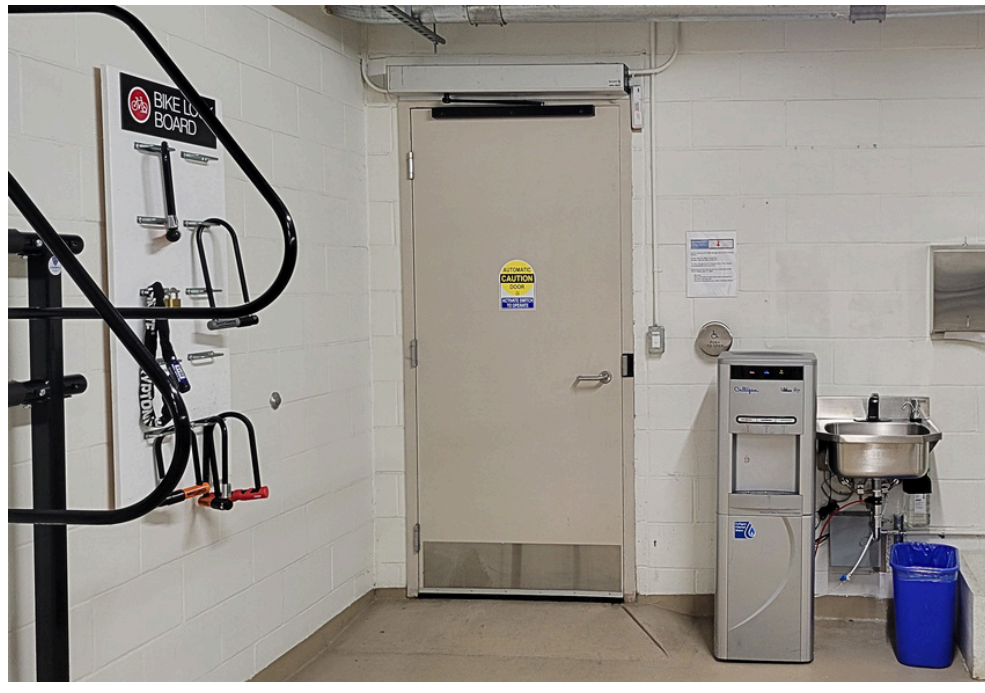
## North Entrance (via 2<sup>rd</sup> Ave - beside dental office)

- Scan to enter (you may need to use the push-to-open button)
- Follow the Ramp to the second set of bike doors
- Proceed down the stairs and turn left
- Follow the teal-colored path to find the "Bike Storage" Room



# P1 Locker/Shower Room Access

- To access the P1 Shower/Locker room, exit through the “side door” into the elevator lobby – locker rooms are across the hall.
- Or you can exit into the parking garage and walk to the elevator lobby.



## Amenities and the Space



Bicycles are kept safe and dry with secure bicycle storage. The full-service storage room includes bike repair tools and wash stations.



Day use lockers are available with access to the change room and shower facility.

Amenities include: towels, shower soaps, cotton swabs, lotion and mouthwash.



## **Bike Facility - Terms & Conditions**

Oxford Properties Group and its Manager are pleased to offer secure bicycle rooms at 400 Third, Eau Claire Tower, and Centennial Place as part of our commitment to supporting sustainable commuting. The following Terms & Conditions apply to all Oxford Properties Group bike facility users and are intended to ensure the safety, cleanliness, and equitable use of these shared facilities.

### **1. Eligibility & Use**

- Use of the bicycle room is restricted to authorized Oxford Properties Group customers and tenants with active employment in the building.
- Each user may park one (1) non-motorized bicycle.
- Bicycle parking access is non-refundable and non-transferable.

### **2. Bike Parking Rules**

- Bike parking is available on a first-come, first-served basis. No guarantee is provided for stall availability or reserved spaces.
- Bicycle racks and lock bars must be used as designated; locks must not be used to reserve a rack.
- Stagger bikes to optimize space (e.g., alternate handlebars up/down).

### **3. Lock & Overnight Policy**

- Bikes may not be left overnight.
- Locks may be stored on designated wall-mounted lock bars only. Any locks left on racks or stalls may be cut and removed.
- Oxford does not provide locks.
- Any bike or lock left unattended for an extended period may be treated as lost and found after efforts to contact the owner. Locks or other securing devices will be cut and removed if necessary.

### **4. Bike ID Tags**

- All bikes must display a visible official Bike ID Tag at all times.
- Tags are available via Concierge or Security. Replacement tags must be requested if lost.

### **5. Entry, Exit & Conduct**

- Cyclists must dismount and enter or exit through designated exterior or parkade entrances only.
- Bicycles are not allowed in lobbies, elevators, common areas, or tenant spaces.
- Each rider must scan their access card individually when entering.

### **6. Cleanliness & Safety**

- The bicycle room must be kept clean and tidy at all times.
- No uncontained food or beverages may be stored.
- No glass bottles; only unbreakable water bottles are permitted.
- No damage may be caused to other users' property. Respect shared space.
- Bike shoes may not be worn outside the bike room. Damage to flooring or mats will be charged back to the user.
- Charging of e-bikes, e-scooters, or any other personal devices is strictly prohibited.

### **7. Security & Liability**

- Users are responsible for securing their own property at all times (including helmets and gear).
- Oxford is not liable for theft, loss, or damage of any items in the bike room.
- Use of the facility is entirely at the user's own risk.

### **8. Violations & Termination**

- Oxford reserves the right to revoke access to the facility without notice for any non-compliance.
- If a user leaves employment at the building, bike room privileges may be terminated.
- Any costs related to removing bikes or locks will be the responsibility of the user.

**By using the bicycle facility, you acknowledge and accept these Terms & Conditions. Oxford Properties Group and its Manager reserves the right to update this policy at any time.**